

Your Company Here

Insured: John Doe
Property: 1234 Anywhere St
San Diego, CA 92101

Home: (858) 349-2573

Claim Number:

Policy Number:

Type of Loss: <NONE>

Date of Loss:
Date Inspected:

Date Received:
Date Entered: 10/25/2016 11:02 AM

Price List: CASD8X_OCT16
Restoration/Service/Remodel
Estimate: SAMPLE_FIRE

SAMPLE_FIRE

Main Level

Main Level

DESCRIPTION	QTY	REMOVE	REPLACE	TAX	TOTAL
1. Cleaning - Supervisory/Administrative - per hour	24.00 HR	0.00	62.28	0.00	1,494.72
2. Deodorize building - Ozone & hydroxyl treatment	22,297.36 CF	0.00	0.05	0.00	1,114.87
3. Apply odor counteractant - liquid spray	12,518.08 SF	0.00	0.25	10.01	3,139.53
4. Equipment setup, take down, and monitoring (hourly charge)	8.00 HR	0.00	59.31	0.00	474.48
5. Equip. setup, take down & monitoring - after hrs	8.00 HR	0.00	89.06	0.00	712.48
6. Add for personal protective equipment - Heavy duty	10.00 EA	0.00	18.31	14.50	197.60
7. Add for HEPA filter (for negative air exhaust fan)	2.00 EA	0.00	187.17	28.00	402.34
8. Equipment decontamination charge - per piece of equipment	7.00 EA	0.00	37.32	1.58	262.82
9. Fire mitigation emergency svc call - after business hours	1.00 EA	0.00	249.12	0.00	249.12
10. Clean window screen	13.00 EA	0.00	11.01	0.01	143.14
11. Haul debris - per pickup truck load - including dump fees	4.00 EA	127.37	0.00	0.00	509.48
12. Clean light fixture - high detail	28.00 EA	0.00	17.97	0.22	503.38
13. Clean chandelier - with crystal - Heavy	1.00 EA	0.00	176.14	0.01	176.15
14. Heat/AC register - Mechanically attached - Detach & reset	19.00 EA	0.00	7.46	0.00	141.74
15. Clean outlet or switch	38.00 EA	0.00	2.95	0.03	112.13
16. Plastic bag - used for disposal of contaminated items	45.00 EA	0.00	2.89	10.40	140.45

*Plastic bags are used to double bag sharp items that will tear the bags therefor the double bagging is needed and is not covered in the usual line item description.

*The safety and protection of our employees health and well being is of great importance to our company therefor gloves, boots, protective clothing, suites, ear and eye protection, and masks are used on every job .

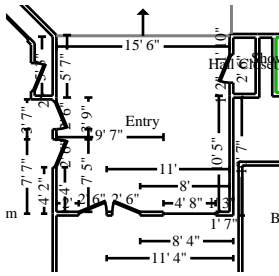
*Plastic is used to protect the customers contents after we move them out of the work area to protect them.

*Paper is used to protect the flooring surface from foot traffic from the door to the work area.

*All of our filters are changed on our equipment every 4th job they are placed on to insure peak performance and customer satisfaction.

17. Apply anti-microbial agent	12,518.08 SF	0.00	0.25	20.03	3,149.55
18. Bathroom ventilation fan - Detach & reset	2.00 EA	0.00	55.10	0.00	110.20

Total: Main Level 84.79 13,034.18



Entry

Height: 8'

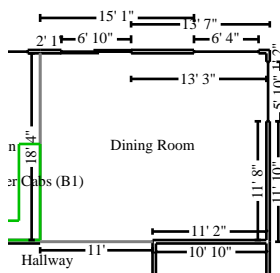
378.35 SF Walls	244.13 SF Ceiling
622.48 SF Walls & Ceiling	244.13 SF Floor
27.13 SY Flooring	47.24 LF Floor Perimeter
62.74 LF Ceil. Perimeter	

Missing Wall

15' 6" X 8'

Opens into LIVING_ROOM

DESCRIPTION	QTY	REMOVE	REPLACE	TAX	TOTAL
19. Neg. air fan/Air scrub.-Large (per 24 hr period)-No monit.	10.00 DA	0.00	124.54	0.00	1,245.40
20. Dehumidifier (per 24 hour period) - Large - No monitoring	10.00 EA	0.00	106.00	0.00	1,060.00
21. Clean window unit (per side) 21 - 40 SF - Heavy	2.00 EA	0.00	23.94	0.00	47.88
22. Clean baseboard - Heavy	47.24 LF	0.00	0.43	0.04	20.35
23. Clean door - with detail (per side)	10.00 EA	0.00	9.12	0.14	91.34
24. Clean floor - tile - Heavy clean	244.13 SF	0.00	0.76	0.98	186.52
25. Clean trim - wood - Heavy	80.00 LF	0.00	0.43	0.06	34.46
26. Clean the walls and ceiling	622.48 SF	0.00	0.31	0.50	193.47
27. Contents - move out then reset - Large room	1.00 EA	0.00	96.95	0.00	96.95
28. HEPA Vacuuming - Detailed - (PER SF)	622.48 SF	0.00	0.68	0.00	423.29
Totals: Entry				1.72	3,399.66



Dining Room

Height: 8'

413.31 SF Walls	408.08 SF Ceiling
821.39 SF Walls & Ceiling	408.08 SF Floor
45.34 SY Flooring	51.66 LF Floor Perimeter
51.66 LF Ceil. Perimeter	

Missing Wall

18' 3 3/4" X 8'

Opens into KITCHEN

Missing Wall

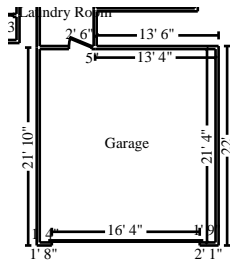
11' 1/4" X 8'

Opens into HALLWAY

DESCRIPTION	QTY	REMOVE	REPLACE	TAX	TOTAL
29. Neg. air fan/Air scrub.-Large (per 24 hr period)-No monit.	10.00 DA	0.00	124.54	0.00	1,245.40
30. Dehumidifier (per 24 hour period) - Large - No monitoring	10.00 EA	0.00	106.00	0.00	1,060.00
31. Clean window unit (per side) 21 - 40 SF - Heavy	8.00 EA	0.00	23.94	0.02	191.54

CONTINUED - Dining Room

DESCRIPTION	QTY	REMOVE	REPLACE	TAX	TOTAL
32. Clean baseboard - Heavy	51.66 LF	0.00	0.43	0.04	22.25
33. Clean floor - tile - Heavy clean	408.08 SF	0.00	0.76	1.63	311.77
34. Clean patio door (sliding glass) (per side) - Heavy	2.00 EA	0.00	44.60	0.17	89.37
35. Contents - move out then reset - Extra large room Includes a pool table.	1.00 EA	0.00	193.88	0.00	193.88
36. Clean the walls and ceiling	821.39 SF	0.00	0.31	0.66	255.29
37. HEPA Vacuuming - Detailed - (PER SF)	821.39 SF	0.00	0.68	0.00	558.55
38. Clean window blind - horizontal or vertical - Heavy	40.00 SF	0.00	1.56	0.03	62.43
Totals: Dining Room				2.55	3,990.48

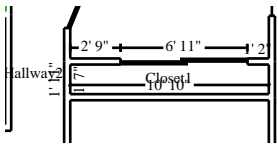


Garage

Height: 10'

815.42 SF Walls	414.63 SF Ceiling
1,230.06 SF Walls & Ceiling	414.63 SF Floor
46.07 SY Flooring	81.54 LF Floor Perimeter
81.54 LF Ceil. Perimeter	

DESCRIPTION	QTY	REMOVE	REPLACE	TAX	TOTAL
39. Dehumidifier (per 24 hour period) - Large - No monitoring	10.00 EA	0.00	106.00	0.00	1,060.00
40. Neg. air fan/Air scrub.-Large (per 24 hr period)-No monit.	10.00 DA	0.00	124.54	0.00	1,245.40
41. Tear out and bag wet insulation	1,230.06 SF	0.79	0.00	5.90	977.65
42. Tear out wet drywall, cleanup, bag for disposal	1,230.06 SF	0.96	0.00	15.74	1,196.60
43. Contents - move out then reset - Extra large room	1.00 EA	0.00	193.88	0.00	193.88
44. Clean stud wall - Heavy	1,230.06 SF	0.00	0.92	1.97	1,133.63
45. HEPA Vacuuming - Detailed - (PER SF)	1,644.69 SF	0.00	1.34	0.00	2,203.88
46. Water Extraction & Remediation Technician - per hour Removal of upper cabinets.	4.00 HR	0.00	59.31	0.00	237.24
47. Dryer - Remove	1.00 EA	0.00	35.08	0.00	35.08
48. Washing machine - Remove	1.00 EA	0.00	38.96	0.00	38.96
Totals: Garage				23.61	8,322.32

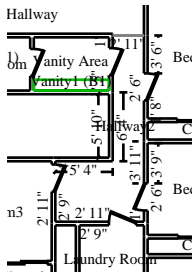


Closet1

Height: 8'

199.13 SF Walls	17.47 SF Ceiling
216.60 SF Walls & Ceiling	17.47 SF Floor
1.94 SY Flooring	24.89 LF Floor Perimeter
24.89 LF Ceil. Perimeter	

DESCRIPTION	QTY	REMOVE	REPLACE	TAX	TOTAL
49. Contents - move out then reset	1.00 EA	0.00	64.62	0.00	64.62
50. Clean baseboard - Heavy	24.89 LF	0.00	0.43	0.02	10.72
51. Neg. air fan/Air scrub.-Large (per 24 hr period)-No monit.	10.00 DA	0.00	124.54	0.00	1,245.40
52. Clean the walls and ceiling	216.60 SF	0.00	0.31	0.17	67.32
53. Clean trim - wood - Heavy	40.00 LF	0.00	0.43	0.03	17.23
54. HEPA Vacuuming - Detailed - (PER SF)	216.60 SF	0.00	0.68	0.00	147.29
55. Clean concrete the floor	17.47 SF	0.00	0.26	0.01	4.55
56. Tear out wet non-salv. cpt, cut/bag- Cat 3 wtr-aft bus. hrs	17.47 SF	1.22	0.00	0.08	21.39
57. Remove Carpet pad	17.47 SF	0.10	0.00	0.00	1.75
Totals: Closet1				0.31	1,580.27



Hallway2

Height: 8'

384.20 SF Walls	79.22 SF Ceiling
463.42 SF Walls & Ceiling	79.22 SF Floor
8.80 SY Flooring	48.03 LF Floor Perimeter
48.03 LF Ceil. Perimeter	

Missing Wall

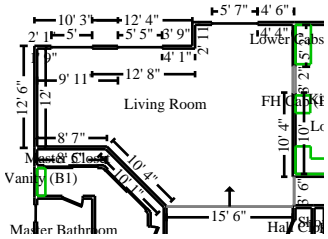
2' 10 11/16" X 8'

Opens into HALLWAY

DESCRIPTION	QTY	REMOVE	REPLACE	TAX	TOTAL
58. Clean baseboard - Heavy	48.03 LF	0.00	0.43	0.04	20.69
59. Clean floor - tile - Heavy clean	79.22 SF	0.00	0.76	0.32	60.53
60. Tear out wet drywall, cleanup, bag for disposal	463.42 SF	0.96	0.00	5.93	450.81
61. Clean door - with detail (per side)	10.00 EA	0.00	9.12	0.14	91.34
62. Water Extraction & Remediation Technician - per hour Removal of all cabinets.	8.00 HR	0.00	59.31	0.00	474.48
63. Tear out trim and bag for disposal - up to Cat 3	80.00 LF	0.91	0.00	1.09	73.89

CONTINUED - Hallway2

DESCRIPTION	QTY	REMOVE	REPLACE	TAX	TOTAL
64. Containment Barrier/Airlock/Decon. Chamber	100.00 SF	0.00	0.80	0.56	80.56
65. Tear out and bag wet insulation	463.42 SF	0.79	0.00	2.22	368.32
66. Peel & seal zipper - heavy duty	1.00 EA	0.00	21.00	0.77	21.77
67. HEPA Vacuuming - Detailed - (PER SF)	542.64 SF	0.00	1.34	0.00	727.14
68. Tear out baseboard	48.03 LF	0.50	0.00	0.00	24.02
Totals: Hallway2				11.07	2,393.55



Living Room

Height: Sloped

866.64 SF Walls	562.60 SF Ceiling
1,429.24 SF Walls & Ceiling	553.64 SF Floor
61.52 SY Flooring	80.68 LF Floor Perimeter
100.03 LF Ceil. Perimeter	

Missing Wall

15' 6" X 8'

Opens into ENTRY

Missing Wall - Goes to Floor

3' 2" X 6' 8"

Opens into KITCHEN

Missing Wall

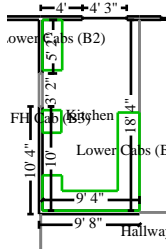
3' 6" X 8'

Opens into HALLWAY

DESCRIPTION	QTY	REMOVE	REPLACE	TAX	TOTAL
69. Clean baseboard - Heavy	80.68 LF	0.00	0.43	0.06	34.75
70. Clean window unit (per side) 21 - 40 SF - Heavy	12.00 EA	0.00	23.94	0.03	287.31
71. Clean television - exterior wipe down	1.00 EA	0.00	15.12	0.04	15.16
72. Clean sofa - Heavy clean	20.00 LF	0.00	40.95	2.26	821.26
73. Clean window blind - horizontal or vertical - Heavy	60.00 SF	0.00	1.56	0.05	93.65
74. Clean cabinetry - lower - inside and out	5.00 LF	0.00	12.49	0.03	62.48
75. Clean countertop - Heavy	20.00 SF	0.00	0.82	0.02	16.42
76. Clean sink - Heavy	1.00 EA	0.00	15.20	0.00	15.20
77. Clean the walls and ceiling	1,429.24 SF	0.00	0.31	1.14	444.20
78. Clean table - dining - Heavy clean	1.00 EA	0.00	26.51	0.21	26.72
79. Tear out wet non-salv. cpt, cut/bag- Cat 3 wtr-aft bus. hrs	553.64 SF	1.22	0.00	2.66	678.10
80. Tear out wet carpet pad and bag for disposal	553.64 SF	0.55	0.00	2.66	307.16
81. Tear out tackless strip and bag for disposal	80.68 LF	0.96	0.00	0.45	77.90

CONTINUED - Living Room

DESCRIPTION	QTY	REMOVE	REPLACE	TAX	TOTAL
82. Clean chair - Heavy clean	6.00 EA	0.00	19.62	0.44	118.16
Totals: Living Room				10.05	2,998.47



Kitchen

Height: 8'

198.72 SF Walls	166.55 SF Ceiling
365.27 SF Walls & Ceiling	121.26 SF Floor
13.47 SY Flooring	12.17 LF Floor Perimeter
34.76 LF Ceil. Perimeter	

Missing Wall - Goes to Floor
Missing Wall

3' 2" X 6' 8"

Opens into LIVING_ROOM

18' 3 3/4" X 8'

Opens into DINING_ROOM

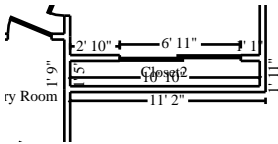
DESCRIPTION	QTY	REMOVE	REPLACE	TAX	TOTAL
83. Clean countertop - Heavy	100.00 SF	0.00	0.82	0.08	82.08
84. Clean refrigerator - interior and exterior - Heavy	1.00 EA	0.00	65.39	0.06	65.45
85. Clean cabinetry - full height - inside and out	2.00 LF	0.00	21.84	0.02	43.70
86. Clean cabinetry - lower - inside and out	23.00 LF	0.00	12.49	0.13	287.40
87. Clean cabinetry - upper - inside and out	20.00 LF	0.00	12.50	0.11	250.11
88. Clean microwave - over range - int. & ext. - Heavy	1.00 EA	0.00	17.59	0.02	17.61
89. Clean oven - interior and exterior - Heavy	1.00 EA	0.00	31.24	0.59	31.83
90. Clean floor - tile - Heavy clean	121.26 SF	0.00	0.76	0.48	92.64
91. Clean window unit (per side) 21 - 40 SF - Heavy	4.00 EA	0.00	23.94	0.01	95.77
92. Clean sink - Heavy	1.00 EA	0.00	15.20	0.00	15.20
93. Contents - move out then reset - Large room	1.00 EA	0.00	96.95	0.00	96.95
94. Clean the walls and ceiling - Heavy	365.27 SF	0.00	0.38	0.29	139.09
95. Clean window blind - horizontal or vertical - Heavy	20.00 SF	0.00	1.56	0.02	31.22
96. Clean dishwasher - interior and exterior - Heavy	1.00 EA	0.00	35.79	0.00	35.79
97. Clean range hood - Heavy	1.00 EA	0.00	24.72	0.01	24.73
98. HEPA Vacuuming - Detailed - (PER SF)	365.27 SF	0.00	0.68	0.00	248.38

CONTINUED - Kitchen

DESCRIPTION	QTY	REMOVE	REPLACE	TAX	TOTAL
99. Clean range - interior and exterior - Heavy	1.00 EA	0.00	52.01	0.08	52.09
Totals: Kitchen				1.90	1,610.04

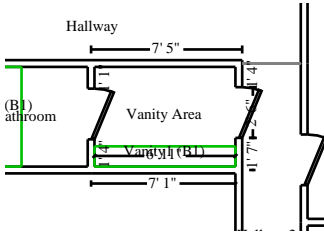
Closet2

Height: 8'



196.47 SF Walls	15.66 SF Ceiling
212.13 SF Walls & Ceiling	15.66 SF Floor
1.74 SY Flooring	24.56 LF Floor Perimeter
24.56 LF Ceil. Perimeter	

DESCRIPTION	QTY	REMOVE	REPLACE	TAX	TOTAL
100. Tear out wet non-salvageable carpet, cut & bag for disp.	15.66 SF	0.59	0.00	0.08	9.32
101. Tear out wet drywall, cleanup, bag - Cat 3 - after hours	212.13 SF	1.96	0.00	2.72	418.49
102. Remove Closet shelf and rod package	7.00 LF	2.97	0.00	0.00	20.79
103. Contents - move out then reset	1.00 EA	0.00	64.62	0.00	64.62
104. Tear out and bag wet insulation	212.13 SF	0.79	0.00	1.02	168.60
105. Tear out trim and bag for disposal - up to Cat 3	40.00 LF	0.91	0.00	0.54	36.94
106. Tear out baseboard	24.56 LF	0.50	0.00	0.00	12.28
107. Clean concrete the floor	15.66 SF	0.00	0.26	0.01	4.08
108. HEPA Vacuuming - Light - (PER SF)	227.79 SF	0.00	0.69	0.00	157.18
109. Tear out wet carpet pad and bag for disposal	15.66 SF	0.55	0.00	0.08	8.69
110. Tear out tackless strip and bag for disposal - Category 3	24.56 LF	1.18	0.00	0.14	29.12
111. Clean stud wall - Heavy	212.13 SF	0.00	0.92	0.34	195.50
Totals: Closet2				4.93	1,125.61

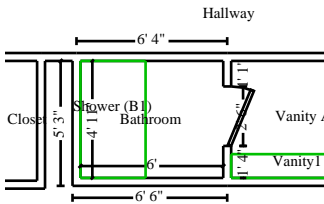


Vanity Area

Height: 8'

163.02 SF Walls	34.17 SF Ceiling
197.19 SF Walls & Ceiling	27.23 SF Floor
3.03 SY Flooring	14.78 LF Floor Perimeter
23.73 LF Ceil. Perimeter	

DESCRIPTION	QTY	REMOVE	REPLACE	TAX	TOTAL
112. Clean floor - tile - Heavy clean	27.23 SF	0.00	0.76	0.11	20.80
113. Clean vanity - inside and out	7.00 LF	0.00	11.20	0.04	78.44
114. Clean the walls and ceiling - Heavy	197.19 SF	0.00	0.38	0.16	75.09
115. HEPA Vacuuming - Detailed - (PER SF)	197.19 SF	0.00	0.68	0.00	134.09
116. Clean sink - Heavy	1.00 EA	0.00	15.20	0.00	15.20
Totals: Vanity Area				0.31	323.62

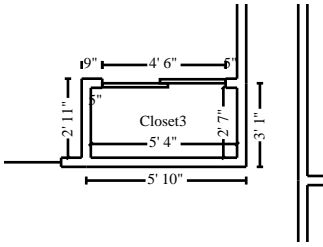


Bathroom

Height: 8'

143.49 SF Walls	29.50 SF Ceiling
172.99 SF Walls & Ceiling	16.04 SF Floor
1.78 SY Flooring	11.44 LF Floor Perimeter
21.83 LF Ceil. Perimeter	

DESCRIPTION	QTY	REMOVE	REPLACE	TAX	TOTAL
117. Clean floor - tile - Heavy clean	16.04 SF	0.00	0.76	0.06	12.25
118. Clean shower - Heavy	1.00 EA	0.00	48.98	0.01	48.99
119. Clean tub - Heavy	1.00 EA	0.00	22.40	0.01	22.41
120. Clean the walls and ceiling - Heavy	172.99 SF	0.00	0.38	0.14	65.88
121. HEPA Vacuuming - Detailed - (PER SF)	172.99 SF	0.00	0.68	0.00	117.63
122. Clean toilet - Heavy	1.00 EA	0.00	25.34	0.00	25.34
Totals: Bathroom				0.22	292.50

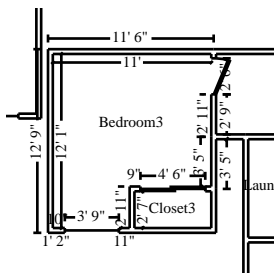


Closet3

Height: 8'

126.11 SF Walls	13.59 SF Ceiling
139.70 SF Walls & Ceiling	13.59 SF Floor
1.51 SY Flooring	15.76 LF Floor Perimeter
15.76 LF Ceil. Perimeter	

DESCRIPTION	QTY	REMOVE	REPLACE	TAX	TOTAL
123. Tear out wet non-salvageable carpet, cut & bag for disp.	13.59 SF	0.59	0.00	0.07	8.09
124. Tear out wet drywall, cleanup, bag for disposal	139.70 SF	0.96	0.00	1.79	135.90
125. Remove Closet shelf and rod package	7.00 LF	2.97	0.00	0.00	20.79
126. Remove Carpet pad	13.59 SF	0.10	0.00	0.00	1.36
127. Tear out and bag wet insulation	139.70 SF	0.79	0.00	0.67	111.03
128. Contents - move out then reset	1.00 EA	0.00	64.62	0.00	64.62
129. Tear out trim and bag for disposal - up to Cat 3	40.00 LF	0.91	0.00	0.54	36.94
130. Tear out baseboard	15.76 LF	0.50	0.00	0.00	7.88
131. Clean concrete the floor	13.59 SF	0.00	0.26	0.01	3.54
132. HEPA Vacuuming - Detailed - (PER SF)	153.29 SF	0.00	1.34	0.00	205.41
133. Clean stud wall - Heavy	139.70 SF	0.00	0.92	0.22	128.74
Totals: Closet3				3.30	724.30



Bedroom3

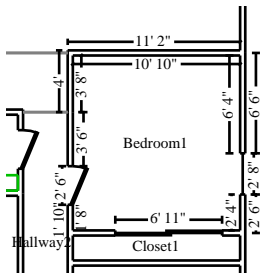
Height: 8'

369.33 SF Walls	116.59 SF Ceiling
485.92 SF Walls & Ceiling	116.59 SF Floor
12.95 SY Flooring	46.17 LF Floor Perimeter
46.17 LF Ceil. Perimeter	

DESCRIPTION	QTY	REMOVE	REPLACE	TAX	TOTAL
134. Tear out wet non-salvageable carpet, cut & bag for disp.	116.59 SF	0.59	0.00	0.56	69.35
135. Remove Carpet pad	116.59 SF	0.10	0.00	0.00	11.66
136. Tear out wet drywall, cleanup, bag for disposal	485.92 SF	0.96	0.00	6.22	472.70
137. Contents - move out then reset - Large room	1.00 EA	0.00	96.95	0.00	96.95

CONTINUED - Bedroom3

DESCRIPTION	QTY	REMOVE	REPLACE	TAX	TOTAL
138. Clean window unit (per side) 21 - 40 SF	4.00 EA	0.00	17.06	0.01	68.25
139. Clean door - with detail (per side)	4.00 EA	0.00	9.12	0.06	36.54
140. Tear out and bag wet insulation	485.92 SF	0.79	0.00	2.33	386.21
141. Clean window blind - horizontal or vertical - Heavy	40.00 SF	0.00	1.56	0.03	62.43
142. Light fixture - Detach & reset	1.00 EA	0.00	43.14	0.00	43.14
143. Tear out baseboard	46.17 LF	0.50	0.00	0.00	23.09
144. Clean concrete the floor	116.59 SF	0.00	0.26	0.09	30.40
145. HEPA Vacuuming - Detailed - (PER SF)	602.51 SF	0.00	1.34	0.00	807.36
146. Clean stud wall - Heavy	485.92 SF	0.00	0.92	0.78	447.83
Totals: Bedroom3				10.08	2,555.91



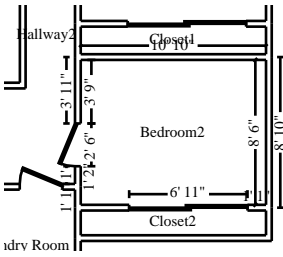
Bedroom1

Height: 8'

354.55 SF Walls
 477.25 SF Walls & Ceiling
 13.63 SY Flooring
 44.32 LF Ceil. Perimeter

122.70 SF Ceiling
 122.70 SF Floor
 44.32 LF Floor Perimeter

DESCRIPTION	QTY	REMOVE	REPLACE	TAX	TOTAL
147. Tear out wet non-salvageable carpet, cut & bag for disp.	122.70 SF	0.59	0.00	0.59	72.98
148. Remove Carpet pad	122.70 SF	0.10	0.00	0.00	12.27
149. Clean door - with detail (per side)	4.00 EA	0.00	9.12	0.06	36.54
150. Contents - move out then reset - Large room	1.00 EA	0.00	96.95	0.00	96.95
151. Clean window unit (per side) 21 - 40 SF - Heavy	4.00 EA	0.00	23.94	0.01	95.77
152. Clean ceiling fan and light	1.00 EA	0.00	22.05	0.00	22.05
153. Clean trim - wood - Heavy	20.00 LF	0.00	0.43	0.02	8.62
154. HEPA Vacuuming - Detailed - (PER SF)	477.25 SF	0.00	0.68	0.00	324.53
155. Tear out tackless strip bag for disposal	44.32 LF	0.96	0.00	0.25	42.80
156. Clean concrete the floor	122.70 SF	0.00	0.26	0.10	32.00
Totals: Bedroom1				1.03	744.51

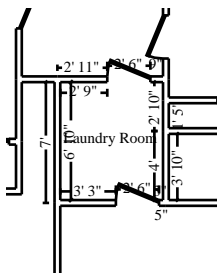


Bedroom2

Height: 8'

308.87 SF Walls	91.77 SF Ceiling
400.64 SF Walls & Ceiling	91.77 SF Floor
10.20 SY Flooring	38.61 LF Floor Perimeter
38.61 LF Ceil. Perimeter	

DESCRIPTION	QTY	REMOVE	REPLACE	TAX	TOTAL
157. Tear out wet non-salvageable carpet, cut & bag for disp.	91.77 SF	0.59	0.00	0.44	54.58
158. Tear out wet drywall, cleanup, bag - Cat 3 - after hours	400.64 SF	1.96	0.00	5.13	790.38
159. Contents - move out then reset - Large room	1.00 EA	0.00	96.95	0.00	96.95
160. Clean window unit (per side) 21 - 40 SF - Heavy	4.00 EA	0.00	23.94	0.01	95.77
161. Tear out and bag wet insulation - Category 3 - after hours	400.64 SF	1.70	0.00	1.92	683.01
162. Remove Carpet pad	91.77 SF	0.10	0.00	0.00	9.18
163. Light fixture - Detach & reset	1.00 EA	0.00	43.14	0.00	43.14
164. Tear out trim and bag for disposal - up to Cat 3	20.00 LF	0.91	0.00	0.27	18.47
165. Tear out baseboard	38.61 LF	0.50	0.00	0.00	19.31
166. Clean concrete the floor	91.77 SF	0.00	0.26	0.07	23.93
167. HEPA Vacuuming - Detailed - (PER SF)	492.40 SF	0.00	1.34	0.00	659.82
168. Tear out tackless strip and bag for disposal	38.61 LF	0.96	0.00	0.22	37.29
169. Clean stud wall - Heavy	400.64 SF	0.00	0.92	0.64	369.23
Totals: Bedroom2				8.70	2,901.06



Laundry Room

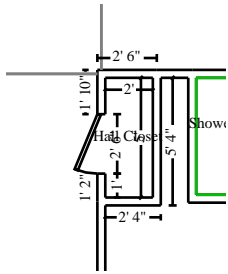
Height: 8'

204.60 SF Walls	40.69 SF Ceiling
245.29 SF Walls & Ceiling	40.69 SF Floor
4.52 SY Flooring	25.58 LF Floor Perimeter
25.58 LF Ceil. Perimeter	

DESCRIPTION	QTY	REMOVE	REPLACE	TAX	TOTAL
170. Clean floor - tile - Heavy clean	40.69 SF	0.00	0.76	0.16	31.08
171. Clean baseboard - Heavy	25.58 LF	0.00	0.43	0.02	11.02

CONTINUED - Laundry Room

DESCRIPTION	QTY	REMOVE	REPLACE	TAX	TOTAL
172. Washing machine - Remove & reset	1.00 EA	0.00	38.96	0.00	38.96
173. Tear out wet drywall, cleanup, bag - Cat 3 - after hours	245.29 SF	1.96	0.00	3.14	483.91
174. Dryer - Remove & reset	1.00 EA	0.00	35.08	0.00	35.08
175. Tear out trim and bag for disposal - up to Cat 3	20.00 LF	0.91	0.00	0.27	18.47
176. Tear out and bag wet insulation - Category 3 - after hours	245.29 SF	1.70	0.00	1.18	418.17
177. Shelving - Detach & reset	6.00 LF	0.00	9.56	0.01	57.37
178. Tear out baseboard	25.58 LF	0.50	0.00	0.00	12.79
179. Clean stud wall - Heavy	245.29 SF	0.00	0.92	0.39	226.06
180. HEPA Vacuuming - Detailed - (PER SF)	285.98 SF	0.00	1.34	0.00	383.21
Totals: Laundry Room				5.17	1,716.12

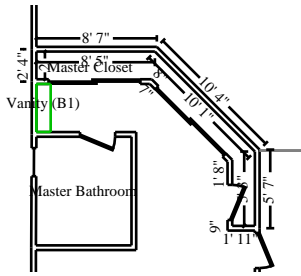


Hall Closet

Height: 8'

112.53 SF Walls	10.07 SF Ceiling
122.59 SF Walls & Ceiling	10.07 SF Floor
1.12 SY Flooring	14.07 LF Floor Perimeter
14.07 LF Ceil. Perimeter	

DESCRIPTION	QTY	REMOVE	REPLACE	TAX	TOTAL
181. Clean floor - tile - Heavy clean	10.07 SF	0.00	0.76	0.04	7.69
182. Clean baseboard - Heavy	14.07 LF	0.00	0.43	0.01	6.06
183. Clean trim - wood - Heavy	20.00 LF	0.00	0.43	0.02	8.62
184. Clean the walls and ceiling - Heavy	122.59 SF	0.00	0.38	0.10	46.68
185. HEPA Vacuuming - Detailed - (PER SF)	122.59 SF	0.00	0.68	0.00	83.36
186. Contents - move out then reset	1.00 EA	0.00	64.62	0.00	64.62
Totals: Hall Closet				0.17	217.03

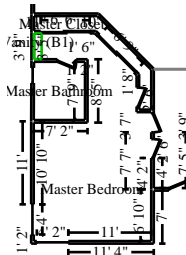


Master Closet

Height: 8'

386.81 SF Walls	38.54 SF Ceiling
425.34 SF Walls & Ceiling	38.54 SF Floor
4.28 SY Flooring	48.35 LF Floor Perimeter
48.35 LF Ceil. Perimeter	

DESCRIPTION	QTY	REMOVE	REPLACE	TAX	TOTAL
187. Clean the walls and ceiling - Heavy	425.34 SF	0.00	0.38	0.34	161.97
188. Tear out wet non-salvageable carpet, cut/bag - Cat 3 water	38.54 SF	0.84	0.00	0.18	32.55
189. Tear out wet carpet pad, cut/bag - Category 3 water	38.54 SF	0.79	0.00	0.18	30.63
190. Tear out tackless strip and bag for disposal	48.35 LF	0.96	0.00	0.27	46.69
191. HEPA Vacuuming - Detailed - (PER SF)	425.34 SF	0.00	0.68	0.00	289.23
Totals: Master Closet				0.97	561.07



Master Bedroom

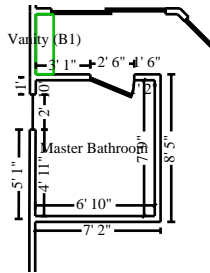
Height: 8'

760.64 SF Walls	332.90 SF Ceiling
1,093.54 SF Walls & Ceiling	329.44 SF Floor
36.60 SY Flooring	91.68 LF Floor Perimeter
97.12 LF Ceil. Perimeter	

DESCRIPTION	QTY	REMOVE	REPLACE	TAX	TOTAL
192. Clean door - with detail (per side)	12.00 EA	0.00	9.12	0.17	109.61
193. Clean baseboard - Heavy	91.68 LF	0.00	0.43	0.07	39.49
194. Clean vanity - inside and out	6.00 LF	0.00	11.20	0.03	67.23
195. Clean countertop - Heavy	40.00 SF	0.00	0.82	0.03	32.83
196. Clean sink - Heavy	1.00 EA	0.00	15.20	0.00	15.20
197. Clean the walls and ceiling - Heavy	1,093.54 SF	0.00	0.38	0.88	416.43
198. Clean trim - wood - Heavy	100.00 LF	0.00	0.43	0.08	43.08
199. Tear out wet carpet pad, cut/bag - Category 3 water	329.44 SF	0.79	0.00	1.58	261.84
200. Tear out tackless strip and bag for disposal	91.68 LF	0.96	0.00	0.51	88.52
201. HEPA Vacuuming - Detailed - (PER SF)	1,093.54 SF	0.00	0.68	0.00	743.61

CONTINUED - Master Bedroom

DESCRIPTION	QTY	REMOVE	REPLACE	TAX	TOTAL
202. Tear out wet non-salv. cpt, cut/bag-Cat 3 wtr-aft bus. hrs	329.44 SF	1.22	0.00	1.58	403.50
203. Clean television - exterior wipe down	1.00 EA	0.00	15.12	0.04	15.16
Totals: Master Bedroom				4.97	2,236.50



Master Bathroom

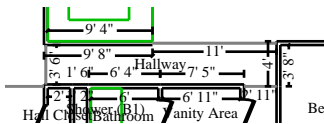
Height: 8'

232.10 SF Walls	52.39 SF Ceiling
284.49 SF Walls & Ceiling	52.39 SF Floor
5.82 SY Flooring	29.01 LF Floor Perimeter
29.01 LF Ceil. Perimeter	

DESCRIPTION	QTY	REMOVE	REPLACE	TAX	TOTAL
204. Clean floor - tile - Heavy clean	52.39 SF	0.00	0.76	0.21	40.03
205. Clean toilet - Heavy	1.00 EA	0.00	25.34	0.00	25.34
206. Clean shower - Heavy	1.00 EA	0.00	48.98	0.01	48.99
207. Clean window unit (per side) 21 - 40 SF - Heavy	4.00 EA	0.00	23.94	0.01	95.77
208. Clean the walls and ceiling - Heavy	284.49 SF	0.00	0.38	0.23	108.34
209. Clean trim - wood - Heavy	20.00 LF	0.00	0.43	0.02	8.62
210. HEPA Vacuuming - Detailed - (PER SF)	284.49 SF	0.00	0.68	0.00	193.45
Totals: Master Bathroom				0.48	520.54

Hallway

Height: 8'



251.32 SF Walls	74.05 SF Ceiling
325.37 SF Walls & Ceiling	74.05 SF Floor
8.23 SY Flooring	31.42 LF Floor Perimeter
31.42 LF Ceil. Perimeter	

Missing Wall	2' 10 11/16" X 8'	Opens into HALLWAY2
Missing Wall	11' 1/4" X 8'	Opens into DINING_ROOM
Missing Wall	3' 6" X 8'	Opens into LIVING_ROOM

DESCRIPTION	QTY	REMOVE	REPLACE	TAX	TOTAL
-------------	-----	--------	---------	-----	-------

CONTINUED - Hallway

DESCRIPTION	QTY	REMOVE	REPLACE	TAX	TOTAL
211. Clean baseboard - Heavy	31.42 LF	0.00	0.43	0.02	13.53
212. Clean the walls and ceiling - Heavy	325.37 SF	0.00	0.38	0.26	123.90
213. Clean floor - tile - Heavy clean	74.05 SF	0.00	0.76	0.30	56.58
214. Contents - move out then reset	1.00 EA	0.00	64.62	0.00	64.62
215. HEPA Vacuuming - Detailed - (PER SF)	325.37 SF	0.00	0.68	0.00	221.25
Totals: Hallway				0.58	479.88
Total: Main Level				176.91	51,727.62
Line Item Totals: SAMPLE_FIRE				176.91	51,727.62

Grand Total Areas:

6,865.62 SF Walls	2,865.29 SF Ceiling	9,730.91 SF Walls and Ceiling
2,787.17 SF Floor	309.69 SY Flooring	781.95 LF Floor Perimeter
0.00 SF Long Wall	0.00 SF Short Wall	864.18 LF Ceil. Perimeter
2,787.17 Floor Area	3,065.11 Total Area	6,865.62 Interior Wall Area
3,779.04 Exterior Wall Area	384.87 Exterior Perimeter of Walls	
0.00 Surface Area	0.00 Number of Squares	0.00 Total Perimeter Length
0.00 Total Ridge Length	0.00 Total Hip Length	

Coverage	Item Total	%	ACV Total	%
Dwelling	49,170.99	95.06%	49,170.99	95.06%
Other Structures	0.00	0.00%	0.00	0.00%
Contents	2,556.63	4.94%	2,556.63	4.94%
Total	51,727.62	100.00%	51,727.62	100.00%

Summary for Dwelling

Line Item Total	48,997.13
Material Sales Tax	173.86
Replacement Cost Value	\$49,170.99
Net Claim	\$49,170.99

Summary for Contents

Line Item Total	2,553.58
Material Sales Tax	3.05
Replacement Cost Value	\$2,556.63
Net Claim	\$2,556.63

Recap of Taxes

	Material Sales Tax (8%)	Storage Rental Tax (8%)
Line Items	176.91	0.00
Total	176.91	0.00

Recap by Room

Estimate: SAMPLE_FIRE

Area: Main Level		12,949.39	25.12%
Coverage: Dwelling	88.46% =	11,454.67	
Coverage: Contents	11.54% =	1,494.72	
Entry		3,397.94	6.59%
Coverage: Dwelling	100.00% =	3,397.94	
Dining Room		3,987.93	7.74%
Coverage: Dwelling	100.00% =	3,987.93	
Garage		8,298.71	16.10%
Coverage: Dwelling	100.00% =	8,298.71	
Closet1		1,579.96	3.06%
Coverage: Dwelling	100.00% =	1,579.96	
Hallway2		2,382.48	4.62%
Coverage: Dwelling	100.00% =	2,382.48	
Living Room		2,988.42	5.80%
Coverage: Dwelling	67.26% =	2,010.07	
Coverage: Contents	32.74% =	978.35	
Kitchen		1,608.14	3.12%
Coverage: Dwelling	95.93% =	1,542.75	
Coverage: Contents	4.07% =	65.39	
Closet2		1,120.68	2.17%
Coverage: Dwelling	100.00% =	1,120.68	
Vanity Area		323.31	0.63%
Coverage: Dwelling	100.00% =	323.31	
Bathroom		292.28	0.57%
Coverage: Dwelling	100.00% =	292.28	
Closet3		721.00	1.40%
Coverage: Dwelling	100.00% =	721.00	
Bedroom3		2,545.83	4.94%
Coverage: Dwelling	100.00% =	2,545.83	
Bedroom1		743.48	1.44%
Coverage: Dwelling	100.00% =	743.48	
Bedroom2		2,892.36	5.61%
Coverage: Dwelling	100.00% =	2,892.36	
Laundry Room		1,710.95	3.32%
Coverage: Dwelling	100.00% =	1,710.95	
Hall Closet		216.86	0.42%
Coverage: Dwelling	100.00% =	216.86	
Master Closet		560.10	1.09%
Coverage: Dwelling	100.00% =	560.10	
Master Bedroom		2,231.53	4.33%
Coverage: Dwelling	99.32% =	2,216.41	
Coverage: Contents	0.68% =	15.12	
Master Bathroom		520.06	1.01%

Your Company Here

Coverage: Dwelling	100.00% =	520.06	
Hallway		479.30	0.93%
Coverage: Dwelling	100.00% =	479.30	
<hr/>		<hr/>	
Area Subtotal: Main Level		51,550.71	100.00%
Coverage: Dwelling	95.05% =	48,997.13	
Coverage: Contents	4.95% =	2,553.58	
<hr/>		<hr/>	
Subtotal of Areas		51,550.71	100.00%
Coverage: Dwelling	95.05% =	48,997.13	
Coverage: Contents	4.95% =	2,553.58	
<hr/>		<hr/>	
Total		51,550.71	100.00%

Recap by Category

Items			Total	%
APPLIANCES			148.08	0.29%
Coverage: Dwelling	@	100.00% =	148.08	
CONT: CLEAN APPLIANCES			1,494.72	2.89%
Coverage: Contents	@	100.00% =	1,494.72	
CONT: CLEAN ELECTRIC ITEMS			30.24	0.06%
Coverage: Contents	@	100.00% =	30.24	
CONT: CLEAN - HARD FURNITURE			144.23	0.28%
Coverage: Contents	@	100.00% =	144.23	
CLEANING			14,454.36	27.94%
Coverage: Dwelling	@	99.55% =	14,388.97	
Coverage: Contents	@	0.45% =	65.39	
CONTENT MANIPULATION			1,195.61	2.31%
Coverage: Dwelling	@	100.00% =	1,195.61	
CONT: CLEAN,UPHOLSTRY & SOFT			819.00	1.58%
Coverage: Contents	@	100.00% =	819.00	
GENERAL DEMOLITION			10,142.44	19.61%
Coverage: Dwelling	@	100.00% =	10,142.44	
FINISH CARPENTRY / TRIMWORK			57.36	0.11%
Coverage: Dwelling	@	100.00% =	57.36	
HEAT, VENT & AIR CONDITIONING			110.20	0.21%
Coverage: Dwelling	@	100.00% =	110.20	
LIGHT FIXTURES			86.28	0.17%
Coverage: Dwelling	@	100.00% =	86.28	
TRAUMA/CRIME SCENE REMEDIATION			5,144.00	9.94%
Coverage: Dwelling	@	100.00% =	5,144.00	
WATER EXTRACTION & REMEDIATION			17,724.19	34.26%
Coverage: Dwelling	@	100.00% =	17,724.19	
Subtotal			51,550.71	99.66%
Material Sales Tax			176.91	0.34%
Coverage: Dwelling	@	98.28% =	173.86	
Coverage: Contents	@	1.72% =	3.05	
Total			51,727.62	100.00%

